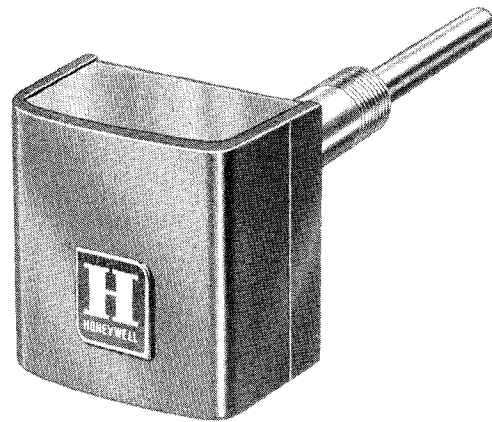


TEMPERATURE SENSOR

C7043A Temperature Sensors are electronic sensors for use with chiller controls. When used with a water chiller control such as the W901A, the C7043 is located in the discharge of the chiller evaporator and decreases resistance as the water temperature increases to signal a need for additional cooling to maintain the water temperature set point. The C7043A includes an immersion well for mounting directly in the water supply.

- ☐ Thermistor element provides accurate sensing of system water temperature changes.
- ☐ Leadwires and wire nuts provided for wiring convenience.
- ☐ Immersion well assembly provided for mounting in water supply.



C7043A

SPECIFICATIONS

MODELS: C7043A Temperature Sensor—immersion sensor for chiller controls. Used with the W901A Centrifugal and Screw Chiller Control to signal need for additional cooling to maintain water temperature set point.

CONTROL RANGE: 35 to 55 F. For additional control ranges, consult local Honeywell representative.

AMBIENT TEMPERATURE RANGE: -40 to 240 F.

MOUNTING: Well assembly screws into 1/2-14 NPT hole in chiller piping.

WIRING: Two external leadwires; twist-on wire nuts are provided.

DIMENSIONS: See Fig. 1.

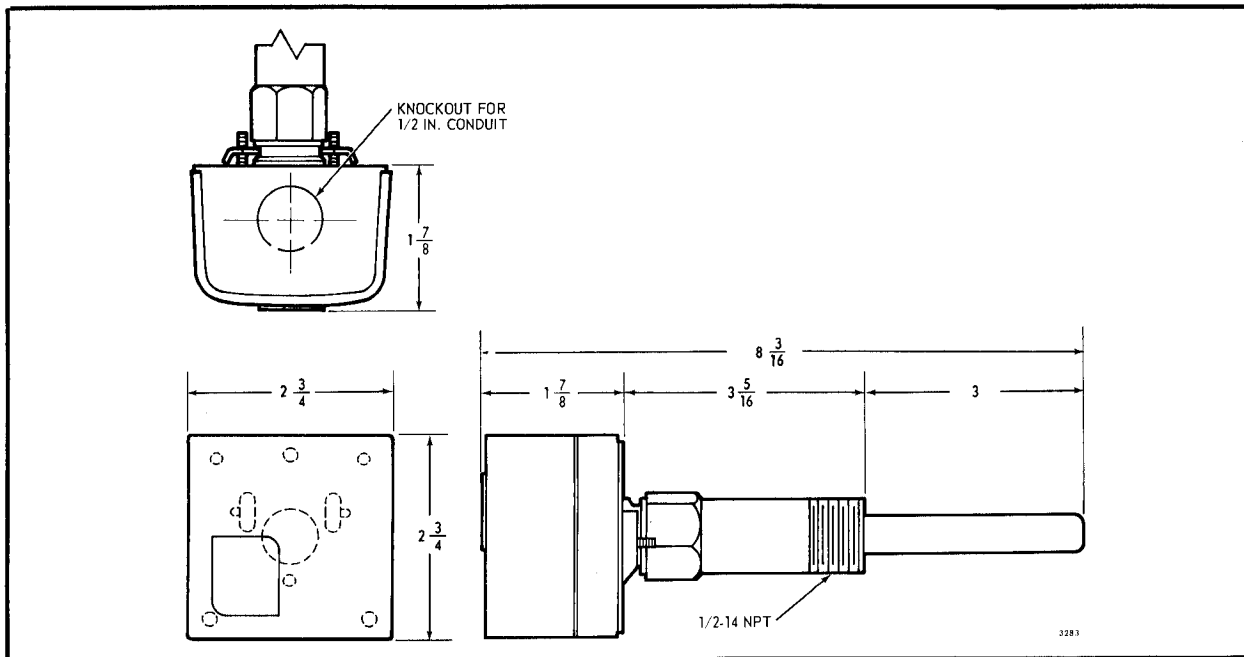


FIG. 1—C7043A DIMENSIONS (IN INCHES).

INSTALLATION

LOCATION AND MOUNTING

Locate the C7043A where it will respond to temperature changes in the chilled water supply. Follow the manufacturer's information for specific location. To mount the C7043A in a pipe elbow with a heel outlet, or in another tapped hole in the system, proceed as follows (refer to Fig. 2):

1. Drain the system and open the tapped hole.
2. Put pipe joint compound on the threads of the immersion well and screw it into the elbow, tightening securely.
3. Refill the system and check for leaks.

ORDERING INFORMATION

WHEN ORDERING REFER TO THE PRICE SHEETS FOR COMPLETE ORDERING SPECIFICATION NUMBER, OR ...

SPECIFY—
1. MODEL NUMBER.

ORDER FROM—
1. YOUR USUAL SOURCE, OR
2. HONEYWELL
1885 DOUGLAS DRIVE NORTH
MINNEAPOLIS, MINNESOTA 55422
(IN CANADA—HONEYWELL CONTROLS LIMITED
740 ELLESMERE ROAD
SCARBOROUGH, ONTARIO)
INTERNATIONAL SALES AND SERVICE OFFICES
IN ALL PRINCIPAL CITIES OF THE WORLD.

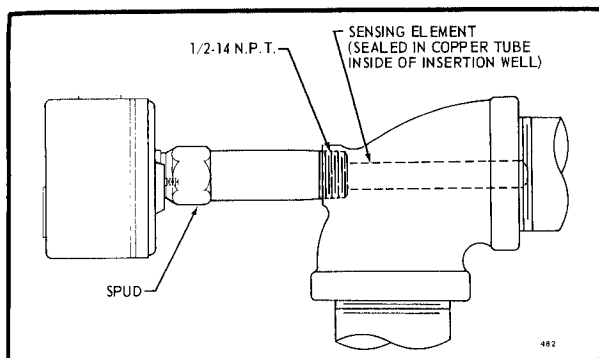


FIG. 2—MOUNTING THE C7043A IN PIPE ELBOW.

After the C7043 is mounted on the pipe, the control case may be re-positioned so that the conduit knock-out is convenient for system wiring. Remove cover from control. Loosen the two screws holding the case and well assembly together about 2-3 turns. Position case as desired and retighten screws.

If the installation is a replacement, the new sensor may be mounted in the existing well assembly. To remove the sensor from well assembly, use a screwdriver to pry clip holding sensor upward. Insert new sensor into well and replace clip, making sure it holds the sensor securely.

WIRING

CAUTION

Disconnect power supply before making wiring connections to prevent electrical shock and equipment damage.

All wiring must comply with local codes and ordinances. Refer to wiring information furnished with the chiller control for wiring hookups. Fig. 3 shows the internal schematic of the C7043.

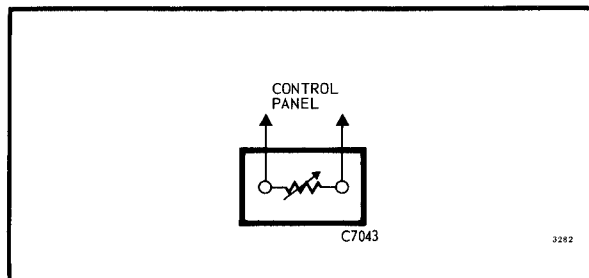


FIG. 3—INTERNAL SCHEMATIC OF THE C7043.

CHECKOUT

Refer to applicable instructions furnished with equipment and controls to check operation of the system.

If the sensor does not appear to be operating properly, use an ohmmeter to measure approximate resistance across terminal leadwires (see table). Also make sure that the control is not internally grounded by measuring resistance (r x 100 scale) between each leadwire and the case.

TEMPERATURE	THERMISTOR RESISTANCE (OHMS) \pm 10 PERCENT
70	1190
71	1160
72	1130
73	1100
74	1075
75	1050
77	1000

By using this Honeywell literature, you agree that Honeywell will have no liability for any damages arising out of your use or modification to, the literature. You will defend and indemnify Honeywell, its affiliates and subsidiaries, from and against any liability, cost, or damages, including attorneys' fees, arising out of, or resulting from, any modification to the literature by you.



HONEYWELL
MINNEAPOLIS, MINN. 55408

INTERNATIONAL Sales Offices in all principal cities of the world.
Manufacturing in Australia, Canada, Finland, France, Germany, Japan,
Mexico, Netherlands, Spain, Taiwan, United Kingdom, U.S.A.